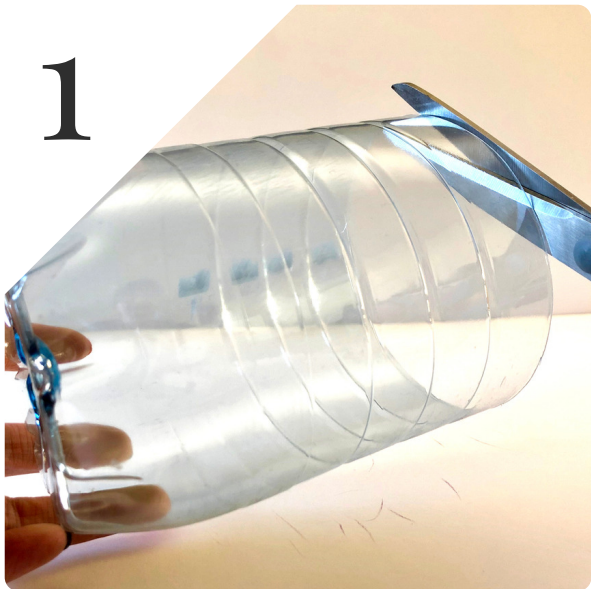




HALLOWEEN

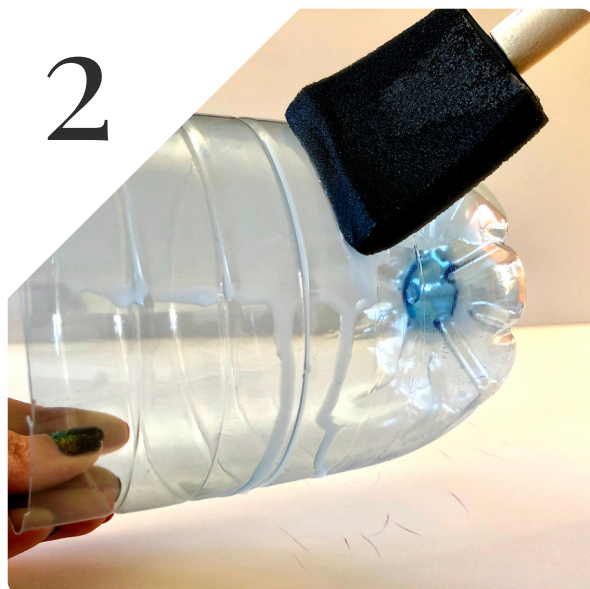
# LANTERNS

1



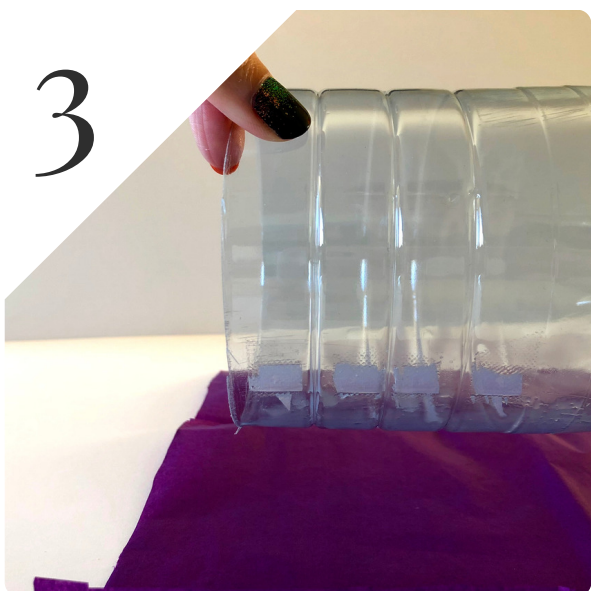
Get a clean plastic water bottle and with the help of an adult cut it down to size.

2



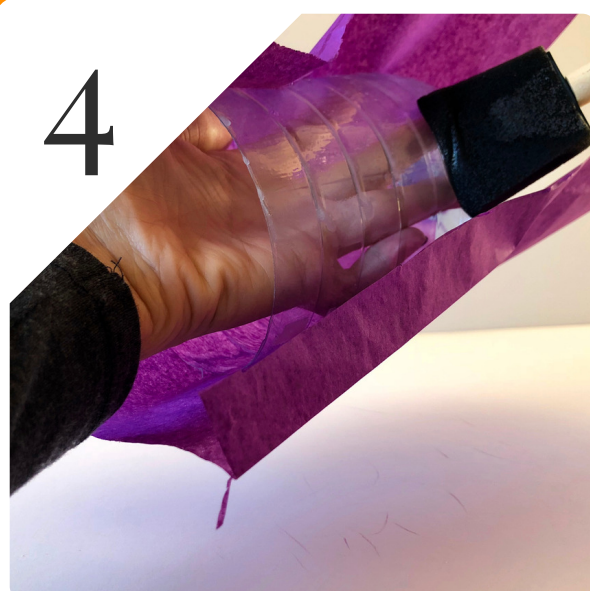
With a brush paint a thin layer of pva glue mixed with water onto a small section of the bottle.

3



Lay your tissue out and place your bottle with glue side down onto the tissue.

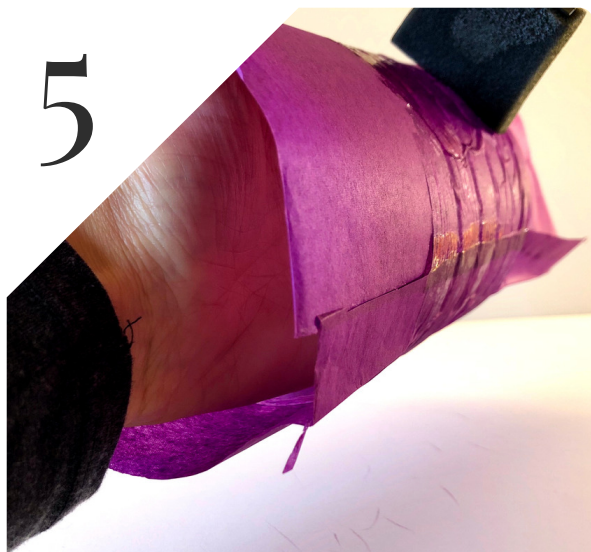
4



Put your glue on in small sections and work your way around your bottle smoothing your tissue with your brush as you go.

# HALLOWEEN LANTERNS

5



When you have glued all the tissue onto the bottle, paint a thin layer of glue over the top of the tissue to seal.

6



Tuck any remaining tissue underneath and carefully trim off the paper at the top with a scissors.

7



Cut out some moons, stars & other shapes from black paper. Stick your shapes on & lightly brush glue over the top to seal them.

8



Make holes and add a handle using pipe cleaners, ribbon, wool or some of the plastic bottle that you trimmed earlier. Add a **BATTERY TEALIGHT** and you're done!